

PRESS KIT

WINTER 2022/2023



Quiz

PEISEY
VALLANDRY





Game rules

This winter, Peisey-Vallandry is going for originality by unveiling its new features through... an interactive quiz! An original and refreshing way to discover the new features of this authentic and multifaceted region. The various themes covered in this press kit are intended to provide all the necessary elements for the production of hard-hitting press articles! The rule is simple: answer the questions asked with three possible answers. Here is a (very) easy example.

Which ski resort is ideally located within one of the world's largest ski areas and at the gateway to the Vanoise National Park, France's oldest national park?

- 1 Peisey-Vallandry
- 2 Peilandry
- 3 Peidry

Answer 1

Located in the heart of the Paradiski ski area and at the gateway to the Vanoise National Park, Peisey-Vallandry is an authentic ski resort with an abundance of magnificent landscapes, friendly inhabitants, a rich cultural heritage and an exceptional mountain area where many different activities are offered. As a true village resort, Peisey-Vallandry is a multi-season destination that will give all visitors unforgettable moments facing most beautiful panoramas: the Mont Blanc, the Beaufortain and the Tarentaise.

To take the game even further, Peisey-Vallandry has developed the first destination quiz, on sale this winter in its Tourist Offices. Inspired by the richness of the local history, it allows you to discover its secrets while having fun. An ideal way to arouse your curiosity and perfect your knowledge! The "Joker" will be happy to send the quiz, as a preview, to anyone who wants to get to know Peisey-Vallandry in an even more entertaining way!

Let's play!



Summary

4 8 12 16 20 24 28 32



Opening dates

LES ARCS /
PEISEY-VALLANDRY SKI AREA
from 10/12/2022 to
29/04/2023

PARADISKI SKI AREA
from 17/12/2022 to
22/04/2023



Accommodation



Which accommodation located next to the Parchey chairlift has its own ski slope? **NEW**

- 1 Les Jardins de Peisey
- 2 Les Champs de Peisey
- 3 Les Prairies de Peisey

Answer 1

Les Jardins de Peisey will be a new tourist residence embodying the renewal of Peisey-Vallandry. This avant-garde establishment will offer 50 tourist accommodation units, from T2 to T6, which will enhance Peisey-Vallandry's accommodation offer. In order to guarantee a top-of-the-range stay for guests, the emphasis will be placed on the layout of the flats' living spaces. Particular attention will be paid to the kitchen and living areas in order to provide maximum ergonomics and space for guests. With ski in/ski out access, the residence will allow easy access to the Paradiski ski area, one of the largest in the world with 425 km of slopes! Easily accessible thanks to the adjacent ski lifts, the slopes will be a ski length from the residence! When they return from their day's skiing, they will be able to use a dedicated slope which will serve the residence. Non-skiers will not be left out. Indeed, for those who prefer off-ski activities, a wellness area with a breathtaking view of the valley, consisting of an indoor swimming pool, a sauna, a hammam and a fitness room will be available to guests. Of course, skiers will also be able to benefit from this high-end relaxation area after their day of skiing. Finally, the residence will be equipped with an underground garage for safe indoor parking during your stay.

What style of architecture has Les Lanchettes been inspired by for its new chalet? **NEW**

- 1 Savoyard
- 2 Norwegian
- 3 Canadian

Answer 2

In a natural setting at the gateway to the Vanoise National Park and the superb Nordic site of Peisey-Vallandry, Les Lanchettes campsite is a real haven of peace. For an ideal moment to share with family or friends, the establishment will inaugurate this winter a new chalet with 3 bedrooms and 2 bathrooms, which can accommodate up to 8 people. The icing on the cake: the Nordic bath on the chalet's outdoor terrace, ideal for recharging your batteries after a day of cross-country skiing!

Price: from €800/week, i.e. €100 per person for a week.





Which funny bird has transformed his home into a cosier nest? **NEW**

- 1 The Royal Eagle**
- 2 The Little Owl**
- 3 The Great Horned Owl**

Answer 2

To maximise the comfort of its guests, the charming gîte le Petit Hibou will unveil its new, completely redesigned accommodation this winter. The first floor, originally composed of 3 bedrooms, will now be converted into 2 large bedrooms, each with a private toilet and shower. The king size beds can be converted into standard single beds. The third bedroom has been converted into a dining room and fully equipped kitchen with a large oven, large fridge/freezer, induction hob, dishwasher and coffee machine. Finally, for optimal comfort, the living room will now be equipped with a large connected TV. In total, the Petit Hibou offers a 70 m2 flat for up to 5 people this winter.

Price: from €1250 per week.



What does Les Balcons du Quiet offer free of charge upon presentation of a train ticket? **NEW**

- 1 Bathroom linen**
- 2 A bottle of champagne**
- 3 Bouquet of roses**

Answer 1

This winter, the sublime 14-bed chalet Les Balcons du Quiet is unveiling a new outdoor SPA on its terrace. This wellness facility comes in addition to the existing sauna and balneotherapy bath. A pool table and a fireplace are also available for guests to enjoy.

THE GREEN BONUS

Towels are provided (on request) for guests who come by train, in order to limit the weight of their luggage, and an extension cord for recharging electric vehicles is available. The chalet, located in the village of Villaret, is also equipped with 35 m² of photovoltaic panels, which produce an average of 12,000 kWh per year.



Shops



What is the specificity of the water used in the beers of the new brewery La Peiserote ? **NEW**

- 1 It is not treated**
- 2 Is cut with white wine**
- 3 It is blessed**

Answer 1

Located in the village of Peisey, La Peiserote is the latest microbrewery to open in the area. It is quite naturally on the ground floor of a 1905 Parisian house, built by former bronze workers who made their fortune in the capital city of France before returning to the country, that Julia Pagès decided to open her micro-brasserie. A former accountant and mother of three children, Julia changed jobs after her husband Nicolas, a maths teacher from Peisey, moved to the area. As a real beer aficionado, Julia taught herself, learning from friends who make their own beer, before following a brewing course in Douvet. Her next goal? To become a master brewer at the end of a forthcoming training course.

In order to respect the locavore movement, the beers are made with unfiltered water from the village of Peisey and are not pasteurised. Four types of beer are available. The white beer is made with 50% wheat and reveals delicate notes of coriander and sweet orange peel. The IPA is floral and has twice as many hops as a classic beer. The blonde is a pale ale and the red is made with a caramel malt that gives it its special taste. But Julia is not stopping there and is already preparing the future! For Christmas 2022, this super-mother is already working on a recipe for a more malty seasonal beer with a beautiful golden colour. Clearly, the Peiserote will be the ideal place for a successful après-ski!

Price: from €2.90 per beer.

A delicious aroma of creativity emanates from the village of Landry. Which new concept store is responsible for this sweet fragrance? **NEW**

- 1 ZoéZen Candle**
- 2 Aux Parfums d'Antan**
- 3 Aux Mille et Une Senteurs**

Answer 1

Originally from Hyères in the Var department, Sarah Zaafrane decided to move to the Alps and settle in Haute-Tarentaise to launch her micro-enterprise of handmade candles in January 2021. A true enthusiast, Sarah makes different ranges of 100% natural scented candles made in France. Anxious to go the extra mile in her approach to well-being, Sarah uses 100% natural European soy wax, free of GMOs and not tested on animals. The fragrances she uses come directly from Grasse, the land of perfume. This winter, Sarah will be selling the perfect new cooing product: a massage candle. But the woman behind ZoéZen Candle does not stop there. Anxious to pass on her passion, Sarah will be offering creative workshops for children every Wednesday and Thursday throughout the winter. From the age of 8, the little ones can learn to make their own candles and leave with their creation!

Price of the creative workshop: less than €30 per workshop, degressive per sibling.
Age: from 8 to 16 years old.



Which shop is getting a makeover to unveil its winter 2022 / 2023 ready-to-wear collection?

NEW

- 1 Intersport Vallandry**
- 2 Ski Gods**
- 3 The Fashionable Marmot**

Answer 1

This winter, the Intersport shop in Vallandry is getting a makeover! The 160 m² dedicated to clothing, mountain accessories and ski equipment hire will be completely renovated to welcome shopping-addicts in the best possible conditions! On the clothing side, it will be possible to discover the new collections of prestigious brands such as Picture, North Face, Sun Valley and Ragwear. On the accessories side, enthusiasts will be able to try out the latest innovations from POC, Julbo, Oakley and Barthes. Because even if clothes don't make the man, good equipment makes the difference in the mountains!

What is the first shop to open in the new Les Cristaux Blancs shopping centre in Plan Peisey?

NEW

- 1 Vival**
- 2 Intersport**
- 3 Sherpa**

Answer 2

In the heart of the new Les Cristaux Blancs residence, the Sherpa Plan Peisey will delight mountain dwellers every morning with homemade bread and pastries freshly baked in the shop's own oven from 7.30am! Ideal to fill up on energy before starting the day! At lunchtime, the shop will offer a full range of snacks to satisfy all tastes. Throughout the season, 250 m² will be dedicated to fresh and local products that will await visitors to the store. With a view to "zero plastic", the store will follow the line of the new Sherpa concepts.

In love, as in work, this butcher/caterer couple is hard at work. Who are they?

NEW

- 1 Coline et Pierre**
- 2 Bonnie and Clyde**
- 3 Batman and Robin**

Answer 1

This winter, the new delicatessen Chez Coline et Pierre opens its doors in Plan Peisey and invites you to discover its local products. The charming local couple offers a catering service and a delicious selection of products, including breads, pastries, fruit and vegetables. This winter, Chez Coline et Pierre will be the place to be for epicureans who love good food!

Which PROXImity shop can satisfy a craving 24/7 in Landry?

NEW

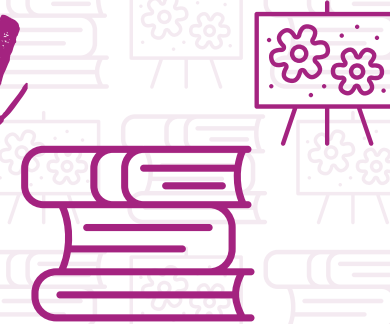
- 1 Proxi**
- 2 Sherpa**
- 3 Vival**

Answer 1

In response to strong demand from residents and customers, a Proxi shop has opened in the village of Landry. This local shop focuses on local products and even offers a 24/7 vending machine. This is a real plus for holidaymakers who can select the products they need during their stay, at any time of the day or night. As an added bonus, the shop is open all year round, including Sundays (7.30am to 12.30pm).



Culture and heritage



Which discovery circuit has the local dialect name of a shoe?

- 1 The galoche trail**
- 2 The clog trail**
- 3 The slipper trail**

Answer 1

The "chemin de la galoche" is a new thematic trail on the history of Landry which is perfectly suited to families because of its short duration and low level of difficulty. It is made up of 12 explanatory panels on the major sites of the village that visitors can discover by following the "galoche". It is possible to include 3 stages in the route: the baroque church of Saint-Michel, the orchard of the Ballastière and the mine path.



Which church, surrounded by wood, invites to discover the history of the village of Peisey? **NEW**

- 1 The Church of the Holy Trinity**
- 2 The Church of Saint-Michel**
- 3 The Church of Saint Sigismond**

Answer 1

The village of Peisey, a Land of Art and History, reveals its history during a walk around the wood that protects the emblematic Church of the Holy Trinity. Narrow streets, fruit orchards, old fields, heathland, old trades, the first ski lifts: an enriching cultural walk thanks to the 14 informative panels along the way, suitable for all ages.



Where is it possible to observe the dahu this winter?

- 1 At the Vanoise National Park**
- 2 At the Museum of Mountain Animals**
- 3 At the GAEC Alpin**

Answer 2

Nestled at the top of the Vallandry cable car, the Museum of Mountain Animals is a unique place which honours the alpine fauna and flora. This 120 m² museum trail is the result of the joint work of Léo Tixier, who is responsible for the development of the Les Arcs/Peisey-Vallandry ski area, and the company Art'scène. Created in partnership with the Vanoise National Park, the museographic space invites visitors to discover more than 30 mountain animal species. Some of them, like the Dahu de Peisey-Vallandry, are extremely rare.



Which place hosted the famous French engineer school École des Mines from 1802 to 1814?

- 1 The Mine Tower**
- 2 The Mine Castle**
- 3 The Mine Palace**

Answer 3

The Palais de la Mine immerses its visitors in the history of Peisey-Vallandry. To better understand this history, we must go back to 1644, the date of the discovery of a vein of galena, or silver lead sulphide. This rare vein was operated for more than 220 years and the Ecole Supérieure des Mines was based in Peisey-Vallandry during the First Empire, from 1802 to 1814. Thanks to the museum trail at the Monts d'Argent site, this emblematic site of the valley reveals its fascinating secrets.



How many chapels does Peisey-Vallandry have?

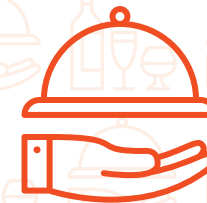
- 1 Two**
- 2 Four**
- 3 Six**

Answer 3

Privileged witnesses of local inhabitants' lives, chapels of the different hamlets are open all year round and can be visited by following the Peisey chapels trail. This easy route (difficulty level blue) will take you to discover each of the 6 chapels in the area: Notre Dame des Neiges chapel in Beaupraz, Sainte Agathe chapel in Moulin, Sainte Marie-Madeleine chapel in Nancroix, Sainte Marguerite chapel in La Chenarie, Saint Jacques chapel in Pracompuet and Saint Pierre chapel in Villaret. In addition to the sublime sanctuary, Notre-Dame-des-Vernettes, which is over 300 years old. No less!

THE +
Explanations and fun quizzes for children that make the visit accessible to all!

Gastronomy



How many restaurants are welcoming a new chef this winter? **NEW**

- 1 Two
- 2 Five
- 3 Ten

Answer 1

L'Adress

The Adress restaurant, located in the heart of the village of Vallandry, is proud to introduce its new chef Benoit Biolley. A native of the area, this versatile local character combines his passion for skiing and gastronomy on a daily basis. Initially a ski instructor in the winter and chef in the summer, Benoit gained his first experience in the kitchen in the South West of France, before returning to his native Savoie. After working at the Relais des Villards in Séez, Benoit decided to join forces with Cyril Michon, the new owner of the Adress. The multi-talented chef invites you to discover a quality cuisine highlighting local and French products.

L'Alpin

A friendly establishment par excellence, the restaurant L'Alpin invites its guests to discover the best of Savoie thanks to the original dishes of new chef Nicolas Charbonneau. A native of Bourg-Saint-Maurice, Nicolas is a true local! With his experience acquired in Savoie but also in the South-West and the Swiss Confederation, this passionate chef skillfully juggles world cuisine with regional products. In love with his land, Nicolas works with products locally sourced such as meat from the Savoie region, diots, pormoniers, reblochons and vegetables from the Ballastière farm in Landry. And when he's not cooking, Nicolas can be found on the Paradiski slopes in the winter and in the summer he continues to marvel at the local hiking trails, which he knows inside out!



Which restaurant is offering new exclusive "weekend specials"?

NEW

- 1 L'Oeil de Bœuf
- 2 L'Aile ou la Cuisse
- 3 Le Cœur de Vall'

Answer 3

The restaurant le Cœur de Vall' innovates by offering, during the weekends, two new dishes to awaken the taste buds of its guests: calf's head with gribiche sauce every first weekend of the month, and kidneys with red wine from Savoie on the 3rd weekend of the month. These local dishes, locally sourced, can be tasted on the spot or taken away. Holder of the Maître Restaurateur label for 3 years, the establishment continues to offer innovative and modern cuisine, made only with fresh products. As proof, the restaurant's menu changes every season, to offer a new experience!



Which Michelin-starred chefs inspired La Table d'Emma for its new winter recipe?

NEW

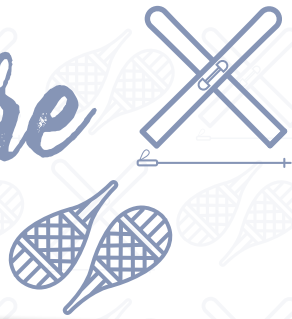
- 1 René Meilleur et Maxime Meilleur
- 2 René Redzepi and Jean Sulpice
- 3 Marc Veyrat and Philippe Etchebest

Answer 2

This winter, the chef with Mediterranean origins, Emma Malfettes, unveils her reindeer slab smoked with juniper wood. Emma got the idea for this original recipe from the Scandinavian René Redzepi (chef of the famous Noma, three-starred and elected best restaurant in the world in 2021) and the Savoyard Jean Sulpice (chef of the Auberge du Père Bise, 2 stars in the Michelin guide). Specific to the Nordic territories, reindeer is a fine and deliciously tender meat. Its taste is enhanced by juniper wood, picked directly in the Peisey-Vallandry area by Emma herself. A surprising meeting of flavours! Once again, Emma's Table, a real jewel in the gastronomic landscape of Peisey-Vallandry, offers a culinary journey off the beaten track! This originality can be explained by Emma's overflowing creativity and her atypical background.



Sports and leisure



Three new kid-friendly activities will be inaugurated in the heart of one of the destination's villages. Where will they be located? **NEW**

- 1 In Vallandry
- 2 In Plan Peisey
- 3 In Pont Baudin

Answer 1

EMBARK ON YOUR FIRST GONDOLA LIFT

This winter, Peisey-Vallandry is inaugurating a new 100% fun facility dedicated to children! Ideally located at the Vallandry snow front, the new play area will allow the youngest to board their first gondola and imagine their first mountain adventures! This 100% made in France play structure is composed of 3 mini gondolas and several play facilities allowing them to slide, climb, crawl and touch! As a bonus, the equipment will be cleared of snow in winter and can be used all year round.

INTRODUCTION TO THE JOYS OF SLIDING

This winter, a new toboggan run will be inaugurated at the former snow garden. This equipment will allow young and old slide enthusiasts to learn about the joys of sliding in complete safety sledges or yooners... all the ways are good when it comes to having fun!

JUMPING FOR JOY

This winter, the Vallandry snow front will be transformed into a real children's paradise! Thanks to Julie Antoine's 4 XXL trampolines, the youngest will be able to have fun in complete safety. Firmly attached to a protective harness, they will be able to practice the craziest stunts! This 100% fun structure is the idea of Julie, a young ski instructor from Marseille, who is only 21 years old. Her objective is simple: to boost the destination's offer of après-ski activities.

Price: €6 for 10 minutes.

How many new snowshoeing itineraries is Peisey-Vallandry unveiling this winter? **NEW**

- 1 Two
- 2 Four
- 3 Six

Answer 3

It's official, Peisey-Vallandry is partnering with TSL Outdoor, the leading French manufacturer of top-of-the-range snowshoes. As part of this partnership, six new snowshoeing routes will be created in Peisey-Vallandry. Three of these routes will start from the Nordic site and will be accessible to all levels. Indeed, 1 green, 1 blue and 1 red trail will be marked out for the pleasure of all, beginners as well as experts. The three other trails will start from Vallandry. The first route will allow walkers to discover Barmont and Ragairon. The second route will offer to discover the traditional hamlet of Villaret via a forest path. Finally, the third route will reveal the hamlet of Les Charmettes. These six new routes are perfect for those who want to learn about this mountain activity that combines sport and contemplation.



Which ski school allows children to become real trappers and ride in total freedom?

- 1 **The French Ski School**
- 2 **The Guide Bureau**
- 3 **Bear Grylls**

Answer 1

This winter, the ESF of Peisey-Vallandry continues to innovate by offering two new activity course formats adapted to the youngest and teenagers: the trapper course and the teenager course!

THE TRAPPER COURSE

Supervised by instructors and mountain guides, children will become real mini trappers! The mountains and the forest will no longer hold any secrets for them. The objective of the enjoyable course is simple: to have fun in the mountains. On the programme: orienteering, animal tracks, land art, igloo building, yooner racing and tips for surviving in the forest!

Price: €35 per outing / from €175 per week.
From 5 years old.

THE TEENAGER COURSE

Thrills guaranteed! This course is ideal for teenagers looking for new sensations. Five hours of riding per day await the budding riders to discover the coolest spots in the destination! On the programme: snowpark, boarder-cross, airbag, forest skiing and powder!

Price: from €300 for a week's course.
From 13 years old.

Which mountain activity specialist offers tailor-made packages to discover ski touring in complete peace of mind?

- 1 **Évolution 2**
- 2 **Changement 3000**
- 3 **Ski73**

Answer 1

The mountain activities specialist Évolution 2 will be offering a new exclusive formula for all-inclusive ski touring courses this winter. Accompanied by mountain professionals, clients will be able to discover the joys of this discipline, which is ideal for admiring the natural mountain landscapes. Two options (week and midweek) will be available, with or without accommodation. Ideal for an introduction to this discipline which combines physical activity and contemplation!

Price: on demand. From 12 years old.

In addition to this attractive offer, Évolution 2 will also invite alpine skiers to discover the pleasures of ski touring during the "after ski" initiation sessions! No need to worry about hiring equipment and an instructor, Évolution 2 takes care of everything. A real guarantee of peace of mind for clients who wish to discover different forms of skiing.

Price: €60 per night outing (instructor and equipment included). From 12 years old.



Which life-size game allows you to discover the mountain area and win exclusive gifts?

- 1 **The Right Track**
- 2 **Pay Day**
- 3 **The Ski Cluedo**

Answer 1

For family fun, the great game "La Bonne Piste" (the Right Track) offers young and old alike the chance to discover or learn more about the mountains while having fun.

Here are the rules to follow for this life-size game:

- 1) Take a map available in the Tourist Offices or in sales outlets
- 2) Go to the places suggested by the riddles indicated on the map, a dedicated sign will put the player on the right track!
- 3) Once you have found the location of the 6 riddles and the secret code, go to la-bonne-piste.lesarcs.com to try your luck in the draw!

TO BE WON? 2 Essential Passes (1 day) and an Eau des Arcs water bottle.





Mountain area



Which precious jewel signed by Les Arcs / Peisey-Vallandry allows pedestrians to benefit from more than 15 exclusive good deals?

- 1 The Pedestrian Pass +
- 2 The Walker's Pass
- 3 The Walking Pass

Answer 1

As the mountain is a plural concept, pedestrian visitors can, in the same way as skiers, take advantage of a varied range of activities to enjoy in the resort. The Pedestrian Pass + is a unique opportunity for pedestrians from the same group to meet up at any time of the day to take advantage of the good deals included in this Pass. With everyone moving at their own pace, they can all meet up at different places in the mountain area.

For contemplation, the Passerelle de l'Aiguille Rouge, at the highest point of the domain, can open up wider horizons. On the fun side, the 1800 toboggan run will echo with shared laughter. The high altitude restaurants will welcome gourmets for a comforting break, the time to share a moment of conviviality.

On which days of the week is it possible to ski for less?

- 1 Saturday and Sunday
- 2 Wednesday
- 3 Monday

Answer 1

The **"SAMEDI JE SKIE"** is a good deal allowing skiers to ski a whole day for **€38** instead of €59 in the Les Arcs / Peisey-Vallandry area, a double benefit to take advantage of the slopes on the least busy day of the week.

NEW

Thanks to the new **"DIMANCHE MALIN"** pass, it's a day of skiing at the price of **€47**, to take advantage of the whole Les Arcs / Peisey-Vallandry area and its 200 km of slopes. No more excuses for not skiing during weekends!



Which brand new sports facility will train the future ski champions of Peisey-Vallandry? **NEW**

- 1 The Kailloux piste
- 2 The David Poisson stadium
- 3 The Olympic ski jump

Answer 2

The David Poisson stadium, a new sports facility renamed in homage to David Poisson (alias "Kailloux"), is located in place of the current Ourson piste in Peisey-Vallandry. The stadium includes 2 timing huts and a private freestyle area for training in the various ski disciplines. This new sports facility will host the following slalom and competition courses: arrows, chamois, bronze stars and courses above class 3. Accessible to all, the stadium will be the training ground for the French handiski team. This training ground for future ski champions will host numerous competitions such as the arrow and chamois races, the Savoie championships, the French Ski Federation races such as the District and Haute-Tarentaise cups and the French Handiskiing Championships. The David Poisson stadium will also host various ski and handiski races on the international FIS (International Ski Federation) circuit. This year, the stadium has been equipped with a brand new LED display to show the times achieved during the runs. Finally, a sculpture created in homage to the skier and representing his signature has been erected at the top of the stadium.

Which of the mountain area's iconic facilities is undergoing a metamorphosis this winter? **NEW**

- 1 The Transarc
- 2 The Vanoise Express
- 3 The Vallandry

Answer 1

By 2024, the mountain resort has set itself the goal of reviving the emblematic link between the Arc 1800 resort and the summits. More than a rebirth, it is a real metamorphosis!

The first stage of this project consists in facilitating and improving access to the slopes from the resort by transforming the express ski pass area into a new reception, advice and sales area. Escalators and a lift also provide quick and easy access to the Transarc departure point.

The signature feature of this space is a scenography based on the water cycle to raise awareness among young and old of the importance of this essential natural resource. The waiting area is no exception and visitors are invited to interact with educational and fun materials.



Which Paradiski mobile application is getting a makeover? **NEW**

- 1 Skinder
- 2 Instaride
- 3 YUGE

Answer 3

Launched in 2015, the Paradiski YUGE application, designed as a real digital companion, now accompanies more than 700,000 people, making up a real community of Yugeurs in the Paradiski area.

From 10 December 2022, Yugeurs will be able to (re) discover their favourite features with a completely new design and a reinvented user experience.

Initially, it will be possible to buy Passes and book activities in an instant without having to go to a sales outlet, to find out in real time how many people are using the lifts so as to make the most of their day, to be able to pinpoint their location instantly and find their way around the resort easily thanks to the interactive map, and also to be warned immediately of any bad weather, as well as to retrieve photos and videos of their best memories!

To discover it for some, and to rediscover it for others, it will be available for download from the AppStore and PlayStore.



How many km of trails are dedicated to cross-country skiing in Peisey-Vallandry?

- 1 43 km
- 2 150 km
- 3 425 km

Answer 1

A sublime natural playground nestled at an altitude of 1450 m, the Nordic site of Peisey-Vallandry offers a vast range of activities suitable for all tastes and ages. In addition to cross-country skiing on a superb 43 km of trails, discovering the bottom of the valley and its surroundings on eleven snowshoeing and walking trails offers a real trip out of time. To be experienced alone or in the company of mountain animals on dog sleds, horses and even reindeer!

For thrill-seekers, it is possible to play the mountaineer by climbing the icefalls or by learning about endurance and precision with the biathlon! In order to share convivial moments with the whole tribe, there is nothing better than the traditional tobogganing on the dedicated area or learning to read a map in a fun and adapted way with the "winter" orientation course.





Unusual



What new and unusual activity combines ski touring and electric bikes?

NEW

- 1 The véliski**
- 2 The sk'e-bike**
- 3 The skélec**

Answer 2

With the sk'e-bike, the provider AvéO offers a combination of 2 disciplines to enjoy the snow without limits: e-bike and ski touring. Thanks to the electric propulsion of the bike, the adventurers will have the freedom to start from the foot of the summits, before reaching the snowy peaks with the help of ski touring! Accompanied by mountain professional William Breyse, the adventurers in search of sensations will be able to take advantage of both the snow and the optimal sunshine conditions of spring. Beware, this is a totally new sensational activity!

Price: €150/person for half a day (9am to 2pm), equipment and supervision included.
Suitable for beginners in ski touring and electric bikes.



If Bacchus was staying in Peisey-Vallandry, what would be his new favourite place? **NEW**

- 1 Ambiance Cave**
- 2 Château Margaux**
- 3 The hospices de Beaune**

Answer 1

At the foot of the new Cristaux Blancs residence, Frédéric Mauduit is inaugurating a new and unique concept: the first wine cellar and tasting room in Peisey-Vallandry, Ambiance Cave! At lunchtime, skiers will be able to take an epicurean break by tasting delicious oysters and seafood. The place will be accessible without reservation and the tasting can be done outside to enjoy the sun. In the evening, the cellar will be open by reservation only or privatized, to allow guests to enjoy this intimate setting in the best possible conditions. Frédéric will be offering a customised tasting formula. On the programme: charcuterie and cheese boards, as well as an assortment of fondues, to discover the best of local gastronomy. Ambiance Cave will feature the best wines of France and quality producers, such as Domaine Bouvet on the Savoie side. In addition to an excellent selection of wines, various local beers and tasting rums will be offered.

This winter, an unusual experience awaits visitors at the arrival of the Varet cable car. What is it?

NEW

- 1 A video mapping experience**
- 2 A fireworks display**
- 3 A juggling demonstration**

Answer 1

To find out the answer, you have to board the Varet cable car. This winter, the 200m² of the Varet cabin garage will give way to an extraordinary experience at altitude! This unexpected passage will reveal a universe composed of 3 different atmospheres in which the visitor will be invited to wander, listen and contemplate twirling light frescos on the theme of the seasons. This video mapping experience entitled "Les Fresques Lumineuses de l'Aiguille Rouge", unusual because of the unexpected nature of the place and its altitude, will amaze its visitors and create a unique out of time memory.

Price: €4/person.



Which Nordic animal can you walk with in the Rosuel valley?

- 1 A reindeer**
- 2 A caribou**
- 3 A moose**

Answer 1

Discover the Nordic site of Peisey-Vallandry in the company of Father Christmas' reindeer, Rudolf and Cochise, this is the unusual activity proposed by Francis Garçon, a true animal lover and native of Peisey-Nancroix. Young and old will be amazed by these animals from the far north, who guide their guests to the gates of the Vanoise National Park. A most original activity to share with the family, in an absolutely magical Lapland atmosphere!

Unique in Savoie, this activity is a real Peisey-Vallandry exclusive. Something special to celebrate? Francis offers tailor-made outings just for you.

Price: from €100.

This winter, the EL56 restaurant is unveiling a unique new concept. What is it?

NEW

- 1 Waiters on skis**
- 2 A snow-flavoured ice cream**
- 3 A 100% intimate restaurant bubble**

Answer 3

What could be more unusual than tasting a Savoyard speciality on an outdoor terrace in the middle of winter? Comfortably installed in a heated bubble, up to 8 guests can gather at EL56 for a gourmet break at the end of their day's skiing. The transparent cocoon allows you to comfortably contemplate the starry sky and the falling snow, while enjoying a comforting dish made from local cheese. To be enjoyed without moderation!

What kind of surprising activities does Emilie Llorca offer her visitors?

NEW

- 1 Personal development**
- 2 Cani-rando**
- 3 Martial arts**

Answer 1

Closely linked to well-being, the mountain environment is ideal for recharging your batteries! To help patients with their physical pain and personal development, specialist Émilie Llorca offers a personalised service adapted to the different needs of her clients. A specialist in hypnosis and hypno-magnetism, Émilie uses several innovative techniques such as neuro-linguistic programming and EDMR, which are ideal for gently healing the body and mind. For this passionate person, the key words are trust, respect and benevolence. Her goal: to relieve pain and find happiness in complete serenity.

THE WELL-BEING BONUS

To recharge your batteries after a day on the mountain, Émilie offers group relaxation sessions at the end of the day. On the programme: self-massage workshops that allow you to relax and then share the know-how you have acquired, to the delight of your loved ones. Ideal to recover after a day of effort on the slopes!

Price: €15 per session.

What artistic technique does the most Savoyard of the little frogs use to personalise mountain equipment?

- 1 Painting**
- 2 Graffiti**
- 3 Calligraphy**

Answer 1

Originally from Great Britain, Frances Treveil arrived in the Alps 5 years ago. After having explored several destinations in Savoie and Haute-Savoie such as La Rosière, Val d'Isère and Chamonix, the artist-painter, better known under the name of Froglet Painting, decided to settle in Peisey-Vallandry. By choosing this artist's name, Frances humorously refers to a little frog that goes from being a tadpole to an adult frog, a sign of its blossoming in a mountain environment! Frances' speciality? Painting mountain scenery on every conceivable surface: snowboards, skis, hats, canvas or even cars! Thanks to a unique paint compound, the designs are weather resistant and last over time. Each object becomes a personalised, tailor-made work. Clients can submit any mountain photograph to Frances for reproduction, point out a particular spot to be photographed and painted, or choose to let their imagination run wild for more originality. The artist is adaptable and can come to your home to show you examples of her work, pick up the equipment to be customised and bring it in when finished. When asked why she decided to take up this artistic activity, Frances simply says "because the mountain landscapes are so beautiful". At the same time, who could contradict her?

Prices: from €2 for personalised stickers and from €180 to customise a snowboard.



Sustainability



What certification is the Les Arcs / Peisey-Vallandry mountain resort committed to? **NEW**

- 1 B Corp**
- 2 1% for the Planet**
- 3 EnVol**

Answer 1

B Corp is a certification granted to commercial companies that meet societal and environmental requirements, governance and transparency towards the public. The name is an abbreviation of "Benefit Corporation", designating a company that is known to have a beneficial impact on the world, while being profitable. The mission of B Corp companies is to be the best FOR the world, not the best IN the world! 170 companies are now B Corp certified in France, and more than 4000 worldwide. Among them are companies like Patagonia, Natures & Découvertes and Picture. In the United States, the first B Corp certified winter sports resort in the world is Taos, New Mexico. Les Arcs / Peisey-Vallandry wants to be the first in Europe to join the circle! The road to certification will require progress in reference systems and practices, sometimes in a considerable way. The objective is set for winter 2022/2023.

Which of these labels has not yet been awarded to Peisey-Vallandry?

- 1 Station Verte**
- 2 Partner of the Vanoise National Park**
- 3 Flocon Vert**

Answer 3

A green destination by nature, Peisey-Vallandry has been awarded the "Station Verte" label since 2017 thanks to its meaningful stays in favour of nature tourism and respect for the environment.

Peisey-Nancroix is also one of only two communes to have signed up to the Vanoise National Park charter. In 2015, the commune expressed its support and its desire to participate in the territorial project that it is carrying out with a real ambition for sustainable development.

Today, Peisey-Vallandry is once again reaffirming its ecological commitment by joining the Flocon Vert initiative.



What is the nearest train station to Peisey-Vallandry?

- 1 Aime-la-Plagne
- 2 Bourg Saint Maurice
- 3 Landry

Answer 3

The Landry station is the closest railway station to Peisey-Vallandry. Ideal for reaching the summits without having to take your car! Once on site, visitors are given a tailor-made welcome by the staff of the Tourist Office and a shuttle service to the various villages. Once you have all the information you need, all you have to do is enjoy your stay in complete peace of mind.

In order to encourage public transport, Peisey-Vallandry offers night shuttle services... but until what time? **NEW**

- 1 8:30pm
- 2 10pm
- 3 11:30pm

Answer 3

As part of its commitment to the environment and its desire to guarantee an ever better customer experience, this winter Peisey-Vallandry will be offering a new free night-time shuttle service. Until 11:30pm, visitors will be able to return home in complete peace of mind, without having to use their own vehicle. This is the ideal way to discover the extensive range of restaurants, a cinema, two festive bars and a new wine tasting cellar.

Circulation 7 days a week from the 10th of December 2022 to the 29th of April 2023.



What is the name of the ski lift that links the village of Peisey to the heart of the resort?

- 1 The télévillage
- 2 The téléstation
- 3 The télépeisey

Answer 1

In order to limit car journeys, the Télévillage lift is free so that visitors and inhabitants of Peisey-Vallandry can go up to the resort without using their vehicle. This equipment, whose departure is next to the first chairlift built in Peisey in 1948, allows you to go from 1300m to 1600m in only 7 minutes.

BONUS

The late hours of the lift (from 5.30 pm to 5.50 pm depending on the period) allow skiers to enjoy the slopes until the area is completely closed.

THE FUTURE IS ON THE WAY

The new Télévillage lift, the destination's flagship cable transport facility, will be completely redesigned to improve the flow of passengers. In 2024, the new Télévillage will be inaugurated, thus promoting low-carbon transport for skiers, pedestrians and workers!





Access

TO PLAY ON SITE!



BY CAR TO PEISEY-VALLANDRY

- 2h15 from Lyon
- 2h30 from Geneva
- 1h30 from Chambéry
- 2h15 from Grenoble
- 3hrs from Turin
- 7hrs from Paris

BY TRAIN TO LANDRY STATION

- 3h30 from Lyon
- 4hrs from Geneva
- 1h45 from Chambéry
- 2h30 from Grenoble
- 10h30 from Turin
- 5hrs from Paris



Joker

THE PERSON WHO CAN HELP YOU!



PRESS CONTACT

Sahra Ronc

Head of Communication
and Marketing

sr@peisey-vallandry.com

+33 (0)4 79 07 94 70

+33 (0)6 22 80 98 55

